

## DESCRIPTION:

A Unique luminaire, the SunStrip10 is a revolutionary energy saving linear fixture with an efficacy of 156 lm/watt (ST10Y14M4). This ST10 fixture has an extremely thin profile (5/8" W X 1/4" H), only weighs 0.1 lbs, and is UL/cUL listed for damp (IP64) or wet (IP66) locations. The ST10Y14M4 luminaire comes standard with a 120° beam angle. The modular nature of the ST10 product line makes it scalable not only in linear footage and lumen output but also in the price structure: providing flexibility in all design aspects of a project which allows for the perfect lighting scheme to be achieved. With super bright energy efficient LEDs, the SunStrip10's slim profile, rugged construction, and multiple mounting options make this linear light the right choice for illuminating any installation where the best illumination, sleek integrated design, and energy savings are desired.

## SPECIFICATIONS:

### LUMINAIRE:

Total luminaire length 14".  
11mm X 8mm profile with two available mounting options.

### CONSTRUCTION:

Extruded aluminum housing has a 11mm X 8mm profile. Plastic mounting brackets are tension or mechanically fit to fixture.

### MODULE:

Ten LED modules each with one chip utilizing Sunlite patented application specific technology with four available color temperature options (2700K, 3500K, 4100K, and 5500K).

### CONTROLS:

0-10V Dimming when utilizing suggested dimming AC-DC driver down to 10%. Smart lighting compatible.

### OPTICS:

Optical system consists of milled aluminum primary optic, clear glass lens, and aluminum reflector.

### FINISH:

Standard finish for housing is anodized aluminum. Consult factory for custom colors.

### ENVIRONMENT:

Wet location rated. Fixture operating temperature -30°C to 40°C.

### WARRANTY:

Ten-year warranty for indoor fixture. Five-year warranty for outdoor fixture and driver. Terms and conditions apply.

### ELECTRICAL:

SunStrip10 setup consists of multiple fixtures and [0-10V dimming] AC-DC driver. Fixture input wattage is 6.5W for 545 delivered-lumen package per 3500K fixture.

Must specify driver. Specify 110V to 277V to driver. Wire lights in series with 18AWG fixture wire. Class 2 transformer is required. For special circuiting, wire gauge, or transformer recommendation, consult factory.

### LIFETIME:

Designed and built to last over 50,000 hours.

### VALIDATION:

UL/cUL listed.

### SHIPPING:

Approximate net shipping weight is 0.1 lb (0.07 kg).



PROJECT:

TYPE:

PRODUCT:

CONTACT:

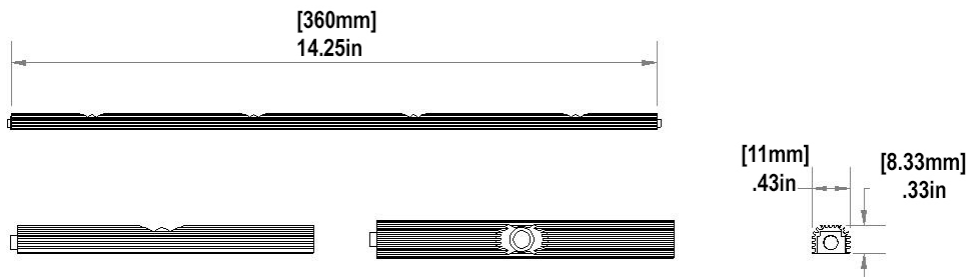


**SUNSTRIP10**  
**STRIP LIGHT**  
**ST10Y14M4**

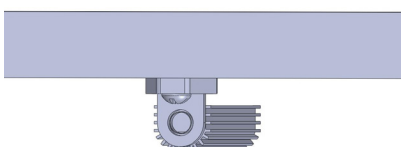
**SOLID STATE LED**

**USE:**  
**UNDER CABINET/  
COVE  
STRIP LIGHT**

## DIMENSIONS:



## TYPICAL MOUNTING CONFIGURATIONS:



**cUL** **us**  
**LISTED**  
**E338721**

### CONTACT:

4811 Quail Crest Place  
Lawrence, KS 66049  
www.sunlitest.com  
T:785.856.0219

### CERTIFICATION:

UL and cUL  
Wet Location Listed  
IP66 Rated

### ENERGY:

>0.9 Power Factor  
700mA /~8VDC  
-30° C to 40°C  
4.4W

### SHIPPING:

Approx. Net Weight  
0.1 lbs (0.07 kg)

# CATALOG NUMBER:

EXAMPLE PRODUCT CODE: ST10Y14M4-0700-SV-35-MG

PRODUCT	LENGTH	LED MODULE SIZE	CURRENT	HOUSING COLOR	COLOR TEMPERATURE	MOUNTING BRACKET
ST10	Y14 14 INCHES	M4 4 MODULES WITH 1 CHIP EACH	0700 mA	SV SILVER	55 5500K 41 4100K 27 2700K 35 3500K	MG MAGNETIC MOUNT S SWIVEL
					SB SOLID BLUE SG SOLID GREEN SR SOLID RED	

## RECOMMENDED DRIVERS AND ACCESSORIES :

### BASIC DRIVERS AND WIRING

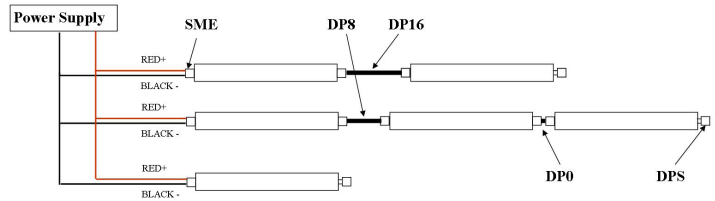
NON-DIMMABLE DRIVERS				
LPLC-18-700	LPC-35-700			
2 TO 3 IN A SERIES	5 TO 7 IN A SERIES			
DIMMABLE DRIVERS				
LUC-018S070DSP	EUC-026S070DSC	EUC-042S070DSC	LUC-24S070DSW (NO WIRES)	LUC-42S070DSW (NO WIRES)
2 IN A SERIES	3 OR 4 IN A SERIES	5 TO 7 IN A SERIES	3 OR 4 IN A SERIES	5 TO 7 IN A SERIES
RSLD035-7A (MOST COMPACT)	RSLD035-9A (MOST COMPACT)	RSLD035-12 (MOST COMPACT)	RSLD035-16 (MOST COMPACT)	LPF25D-36 (DIM TO OFF)
3 IN A SERIES	4 IN A SERIES	5 IN A SERIES	7 IN A SERIES	4 IN A SERIES

CONNECTION ACCESSORIES	
DP0	DIRECT PLUG, END TO END CONNECTION
DP8	DIRECT PLUG CABLE, 8"
DP16*	DIRECT PLUG CABLE, 16"
DPS	DIRECT PLUG SHORT PIN
SME	SINGLE MALE END CABLE

\*DP16 IS RECOMMENDED FOR UNDERCABINET APPLICATIONS.



SINGLE LOCATION INSTALLATION



MULTIPLE LOCATIONS INSTALLATION

## LUMEN OUTPUT:

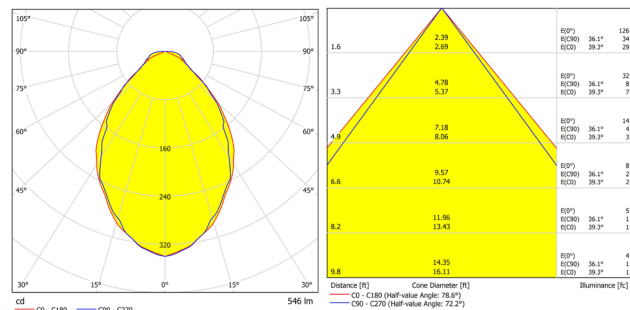
COLOR TEMPERATURE	WATTAGE	LUMEN	CRI
2700K	4.4	517	80
3500K	4.4	546	80
4100K	4.4	572	80
5500K	4.4	675	75

## WORKPLANE FOOT CANDLE:

DISTANCE FROM WORKPLANE	HALF VALUE COVERAGE (FT)	LIGHT LEVEL (FC)
1.5	2.4	152
2	3.2	85
3.5	5.7	28

FC = FOOT CANDEL

## PHOTOMETRICS:



ST10Y14M4-35

ST10Y14M4-35

## DUV RANGE:

